



Certificate of Analysis

FOR COMPLIANCE

Sample:AL30628006-003
Harvest/Lot ID: 23179-SMTM
Batch#: 23179-SMTM
Seed to Sale# 23179-SMTM
Sample Size Received: 13 units
Total Amount: 3200 units
Retail Product Size: 56 gram
Sampled: 06/26/23 01:00 PM
Sampling Start: 01:00 PM
Sampling End: 01:15 PM

PASSED

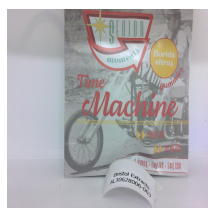
Bristol Extracts LLC

License # : OCM-AUCP-22-000016

4376 State Route 64
Canandaigua, NY, 14424, US

Pages 1 of 1

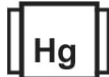
PRODUCT IMAGE



SAFETY RESULTS



Pesticides
PASSED



Heavy Metals
PASSED



Microbials
PASSED



Mycotoxins
PASSED



Residuals Solvents
PASSED



Filtration
NOT TESTED



Water Activity
PASSED



Moisture
NOT TESTED



Terpenes
NOT TESTED

MISC.



Cannabinoid

PASSED



Total THC

0.1734%

Total THC/Container : 97.104 mg



Total CBD

0.1905%

Total CBD/Container : 106.68 mg



Total Cannabinoids

0.3639%

Total Cannabinoids/Container : 203.784 mg

	(6AR,9R) D10-THC	(6AR,9S) D10-THC	CBC	CBD	CBDA	CBDV	CBG	CBGA	CBN	D8-THC	D9-THC	THCA	THCV
%	<LOQ	<LOQ	0.0039	0.1905	<LOQ	0.0025	0.0065	<LOQ	0.0009	<LOQ	0.1734	<LOQ	0.0019
mg/unit	<LOQ	<LOQ	2.184	106.680	<LOQ	1.400	3.640	<LOQ	0.504	<LOQ	97.104	<LOQ	1.064
LOQ	0.0007	0.0007	0.0007	0.0007	0.0007	0.0007	0.0007	0.0007	0.0007	0.0007	0.0007	0.0007	0.0007
%	%	%	%	%	%	%	%	%	%	%	%	%	%

Weight:
3.149g

Analysis Method : SOP.T.30.031.NY, SOP.T.40.031.NY
Analyzed Date : 06/29/23 14:50:46

This Kaycha Labs Certification shall not be reproduced, unless in its entirety, without written approval from Kaycha Labs. The results relate only to the material or product analyzed. ND=Not Detected, ppm=Parts Per Million, ppb=Parts Per Billion, RSD=Relative Standard Deviation. Limit of Detection (LOD) and Limit Of Quantitation (LOQ) are terms used to describe the smallest concentration that can be detected and reliably measured by an analytical procedure, respectively. Action Levels are State determined thresholds based on 9 New York Codes, Rules and Regulations (NYCRR) Part 130 and Cannabis Law. The Measurement of Uncertainty (MU) error is available from the lab upon request. The "Decision Rule" for pass/fail does not include the MU. Any calculated totals may contain rounding errors.

Erica Troy
Lab Director

NY Permit # OCM-CPL-2022-00006
ISO 17025 Accreditation # 97164

Erica

Signature
07/14/23